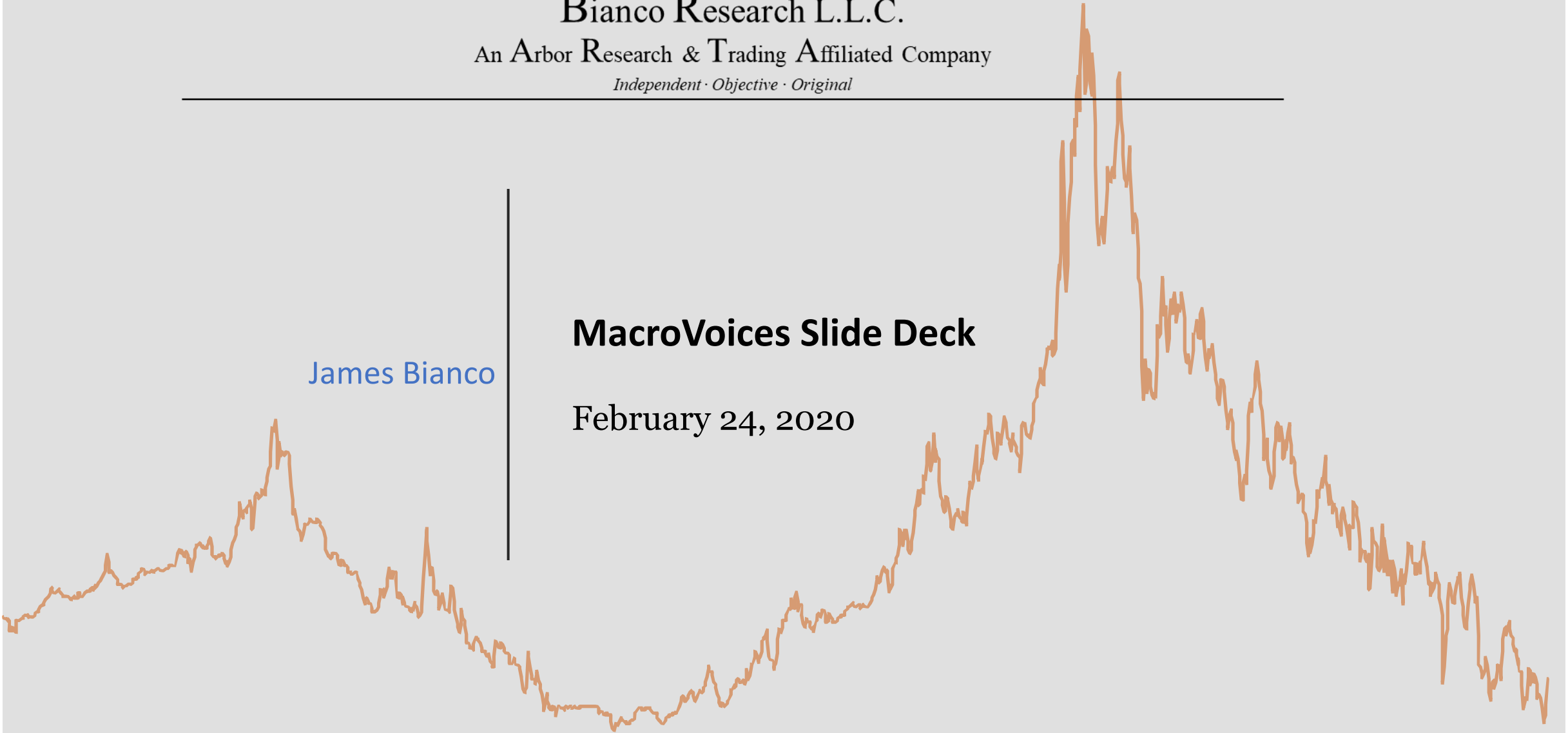


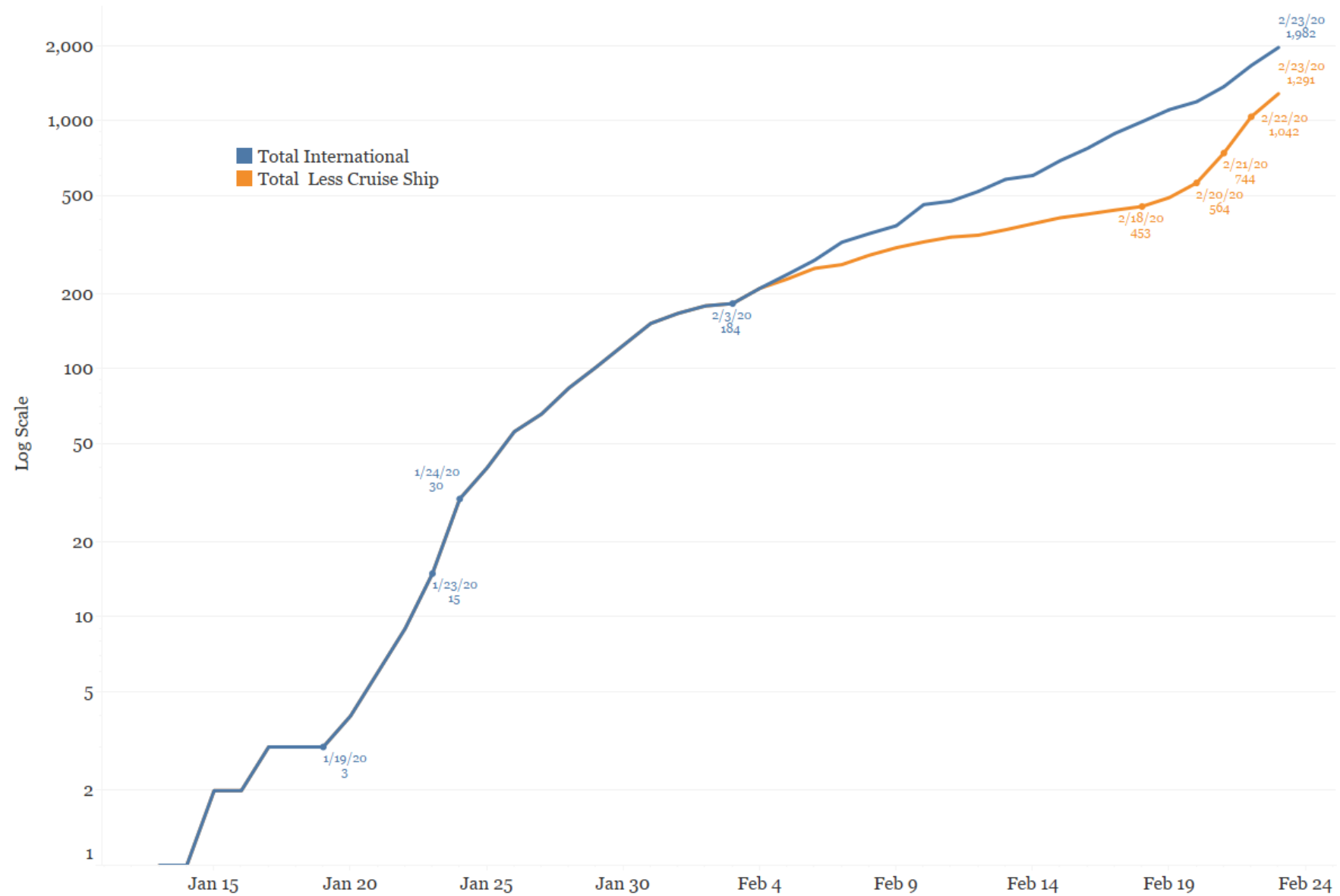
James Bianco

MacroVoices Slide Deck

February 24, 2020



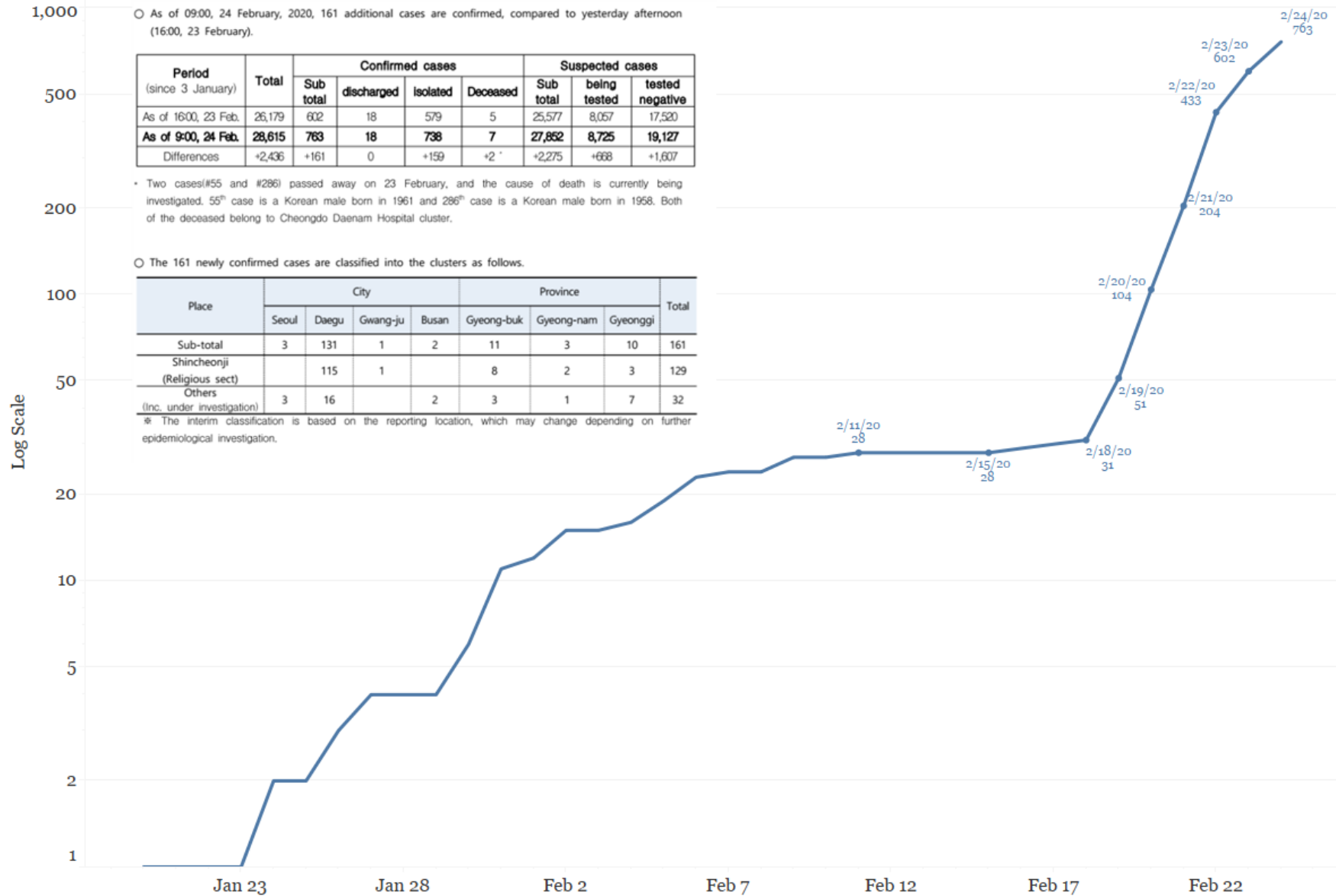
Total Confirmed Infections Outside of China



Sources: https://en.wikipedia.org/wiki/Timeline_of_the_2019%E2%80%9320_Wuhan_coronavirus_outbreak
https://docs.google.com/spreadsheets/d/1Z7VQ5xf3BaTx_LBBbIsW4hLoGYWnZyog3jqsS9Dbgc/htmlview?sl=1

© 2020 Bianco Research, L.L.C. All Rights Reserved
<https://www.biancoresearch.com>

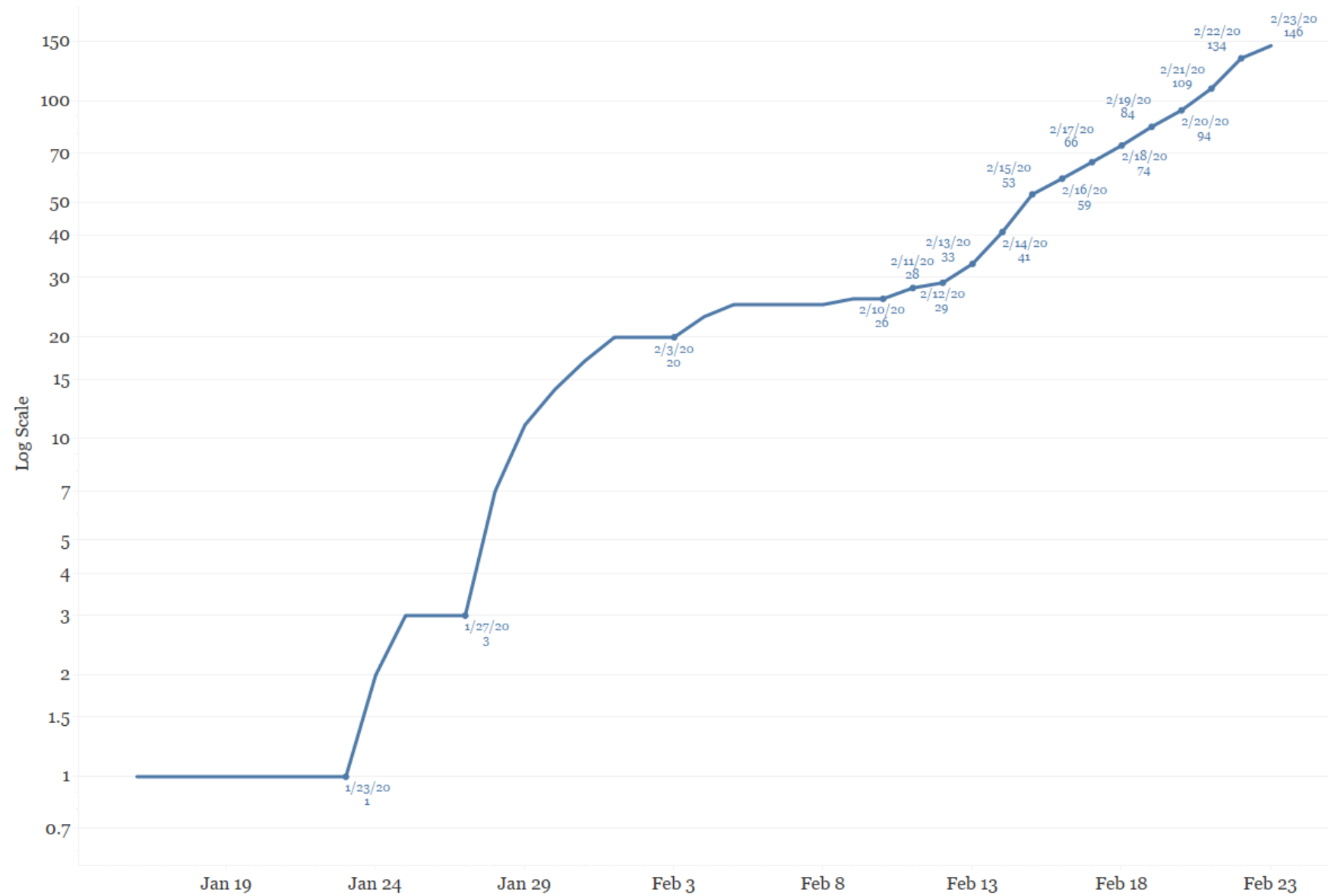
South Korea Coronavirus Infections



Sources: https://en.wikipedia.org/wiki/Timeline_of_the_2019%E2%80%9320_Wuhan_coronavirus_outbreak
https://docs.google.com/spreadsheets/d/1Z7VQ5xf3BaTx_LBBbLW4hLoGYWnZyog3jsS9Dbgc/htmlview?sl=TRUE#

© 2020 Bianco Research, L.L.C. All Rights Reserved
<https://www.biancoresearch.com>

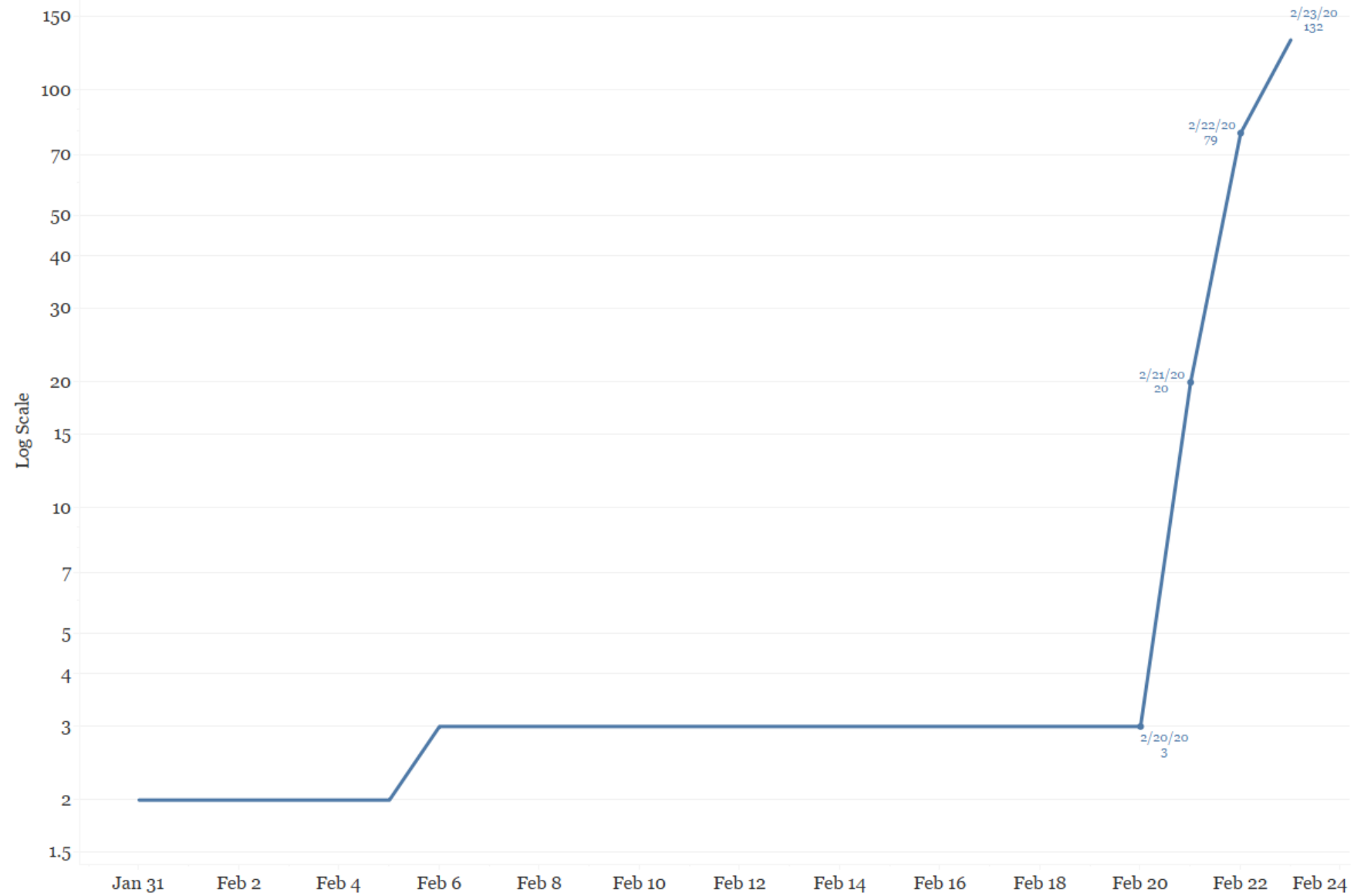
Japan Coronavirus Infections



Sources: https://en.wikipedia.org/wiki/Timeline_of_the_2019%E2%80%9320_Wuhan_coronavirus_outbreak
https://docs.google.com/spreadsheets/d/1Z7VQ5xf3BaTx_LBBblsW4hLoGYWnZyog3jqsS9Dbgc/htmlview?sle=true#

© 2020 Bianco Research, L.L.C. All Rights Reserved
<https://www.biancoresearch.com>

Italy Coronavirus Infections



Sources: https://en.wikipedia.org/wiki/Timeline_of_the_2019%E2%80%9320_Wuhan_coronavirus_outbreak
https://docs.google.com/spreadsheets/d/1Z7VQ5xf3BaTx_LBBbIsW4hLoGYWnZyog3jqsS9Dbgc/htmlview?sl=1

© 2020 Bianco Research, L.L.C. All Rights Reserved
<https://www.biancoresearch.com>

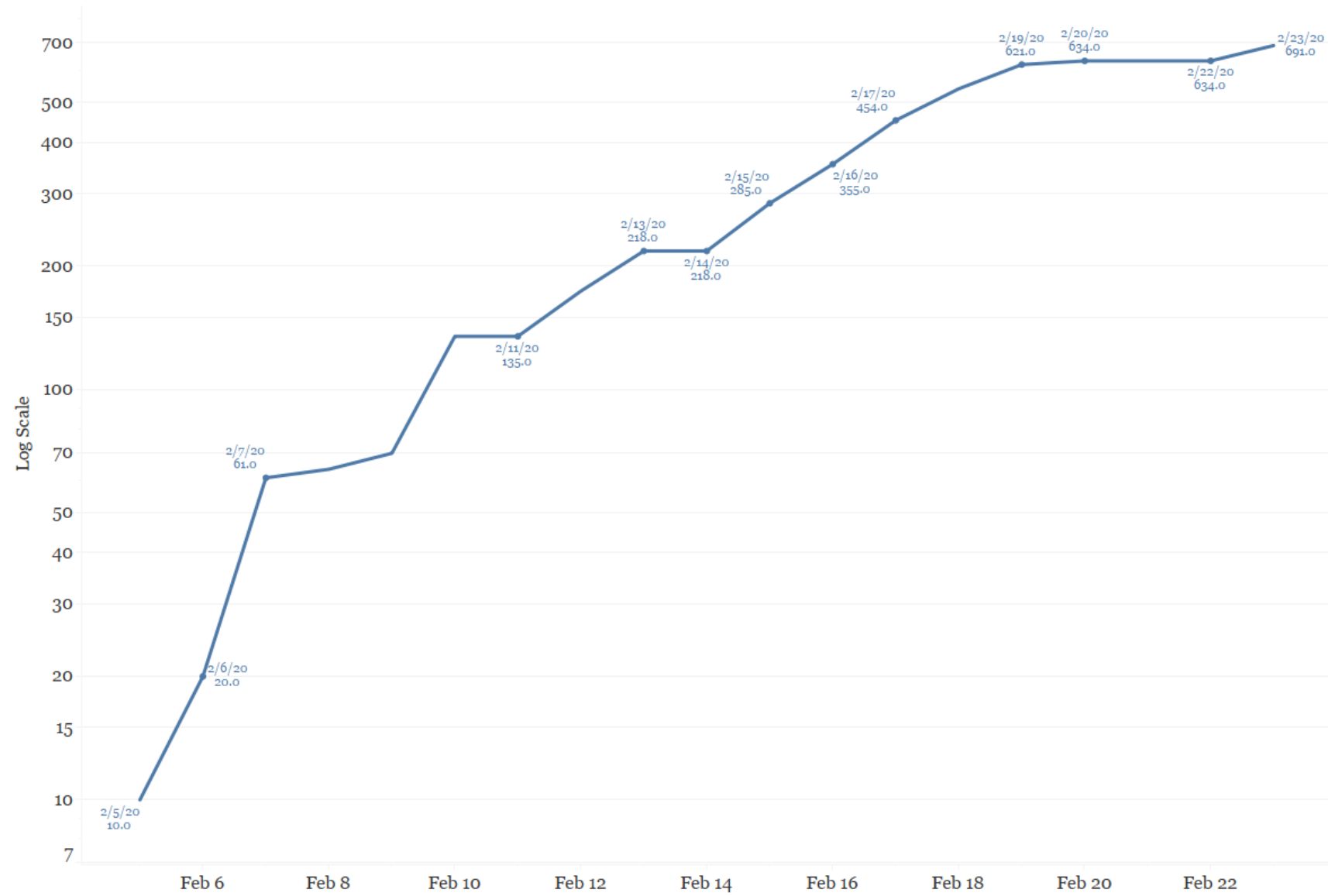
Iran Coronavirus Infections



Sources: https://en.wikipedia.org/wiki/Timeline_of_the_2019%E2%80%9320_Wuhan_coronavirus_outbreak
https://docs.google.com/spreadsheets/d/1Z7VQ5xf3BaTx_LBBbIsW4hLoGYWnZyog3jqsS9Dbgc/htmlview?sle=true#

© 2020 Bianco Research, L.L.C. All Rights Reserved
<https://www.biancoresearch.com>

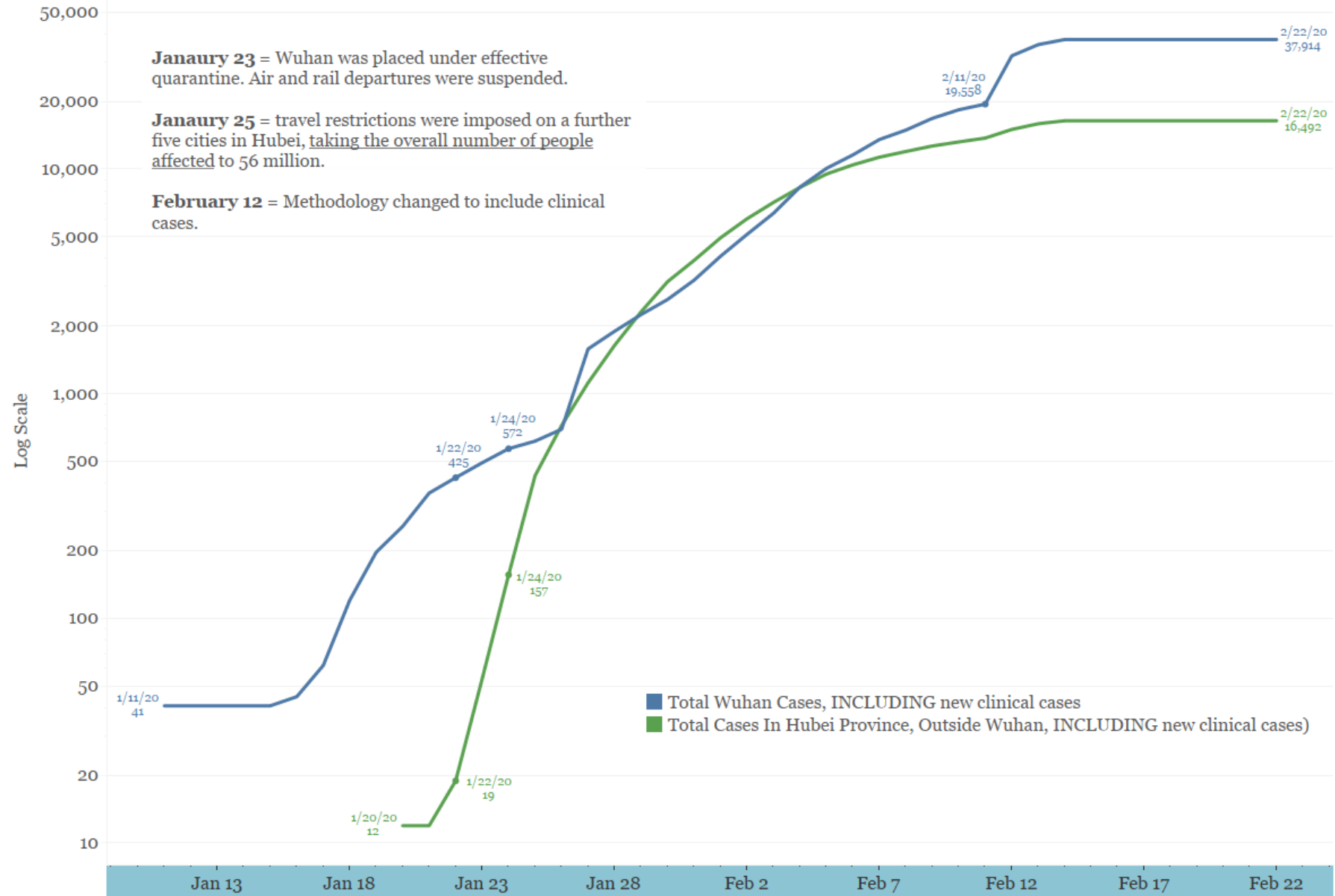
Cruise Ship Infections



Sources: https://en.wikipedia.org/wiki/Timeline_of_the_2019%E2%80%9320_Wuhan_coronavirus_outbreak
https://docs.google.com/spreadsheets/d/1Z7VO5xlf3BaTx_LBBbIsW4hLoGYWnZyog3iqsS9Dbgc/htmlview?sle=true#

© 2020 Bianco Research, L.L.C. All Rights Reserved
<https://www.biancoresearch.com>

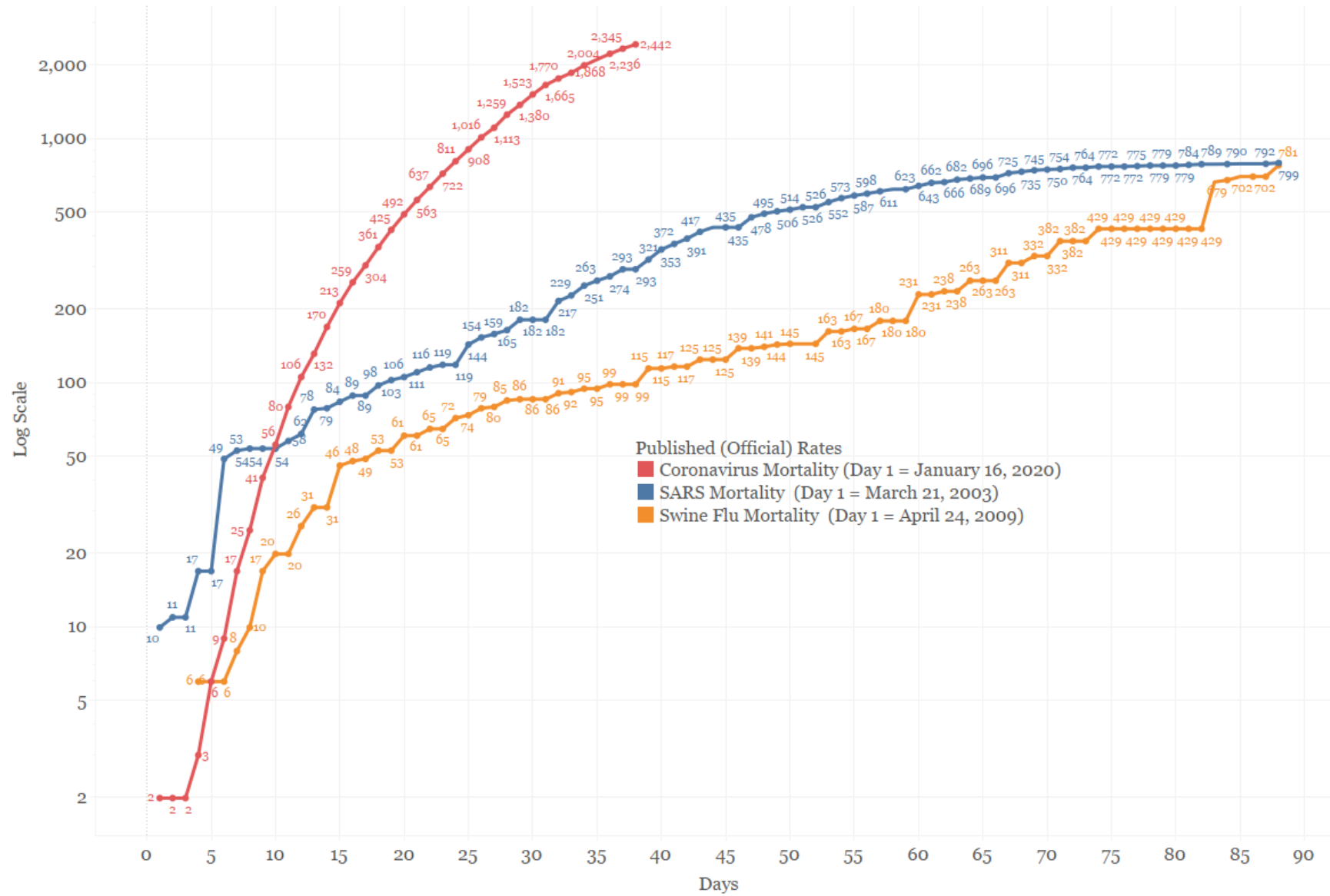
China Confirmed Cases



Source: https://en.wikipedia.org/wiki/Timeline_of_the_2019%E2%80%9320_Wuhan_coronavirus_outbreak

© 2020 Bianco Research, L.L.C. All Rights Reserved
<https://www.biancoresearch.com>

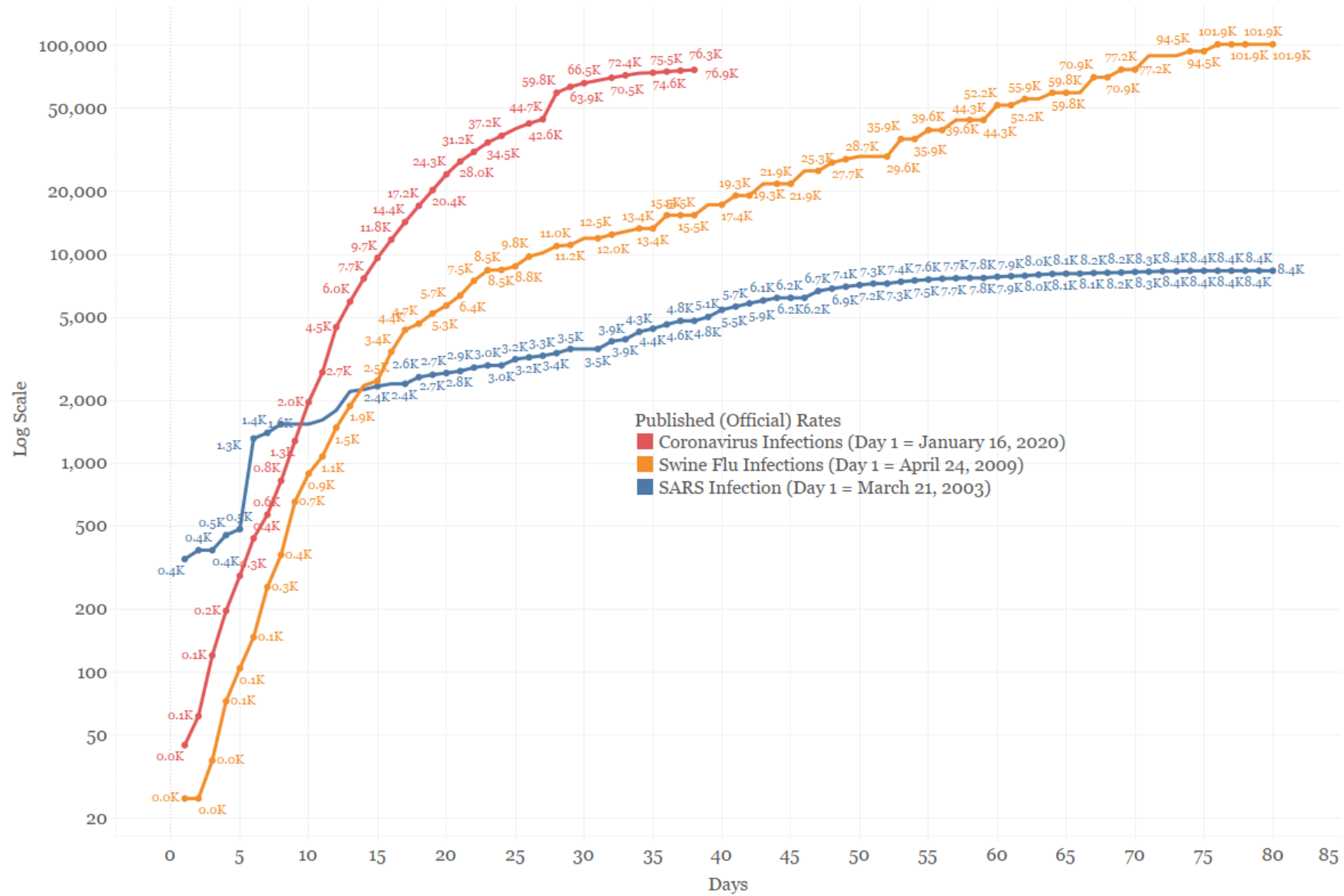
Tracking Mortality



Source: China National Health Commission Daily Reports
<http://www.diaspor.net/health/sars/Total.html>
https://en.wikipedia.org/wiki/2009_flu_pandemic_tables

© 2020 Bianco Research, L.L.C. All Rights Reserved
<https://www.biancoresearch.com>

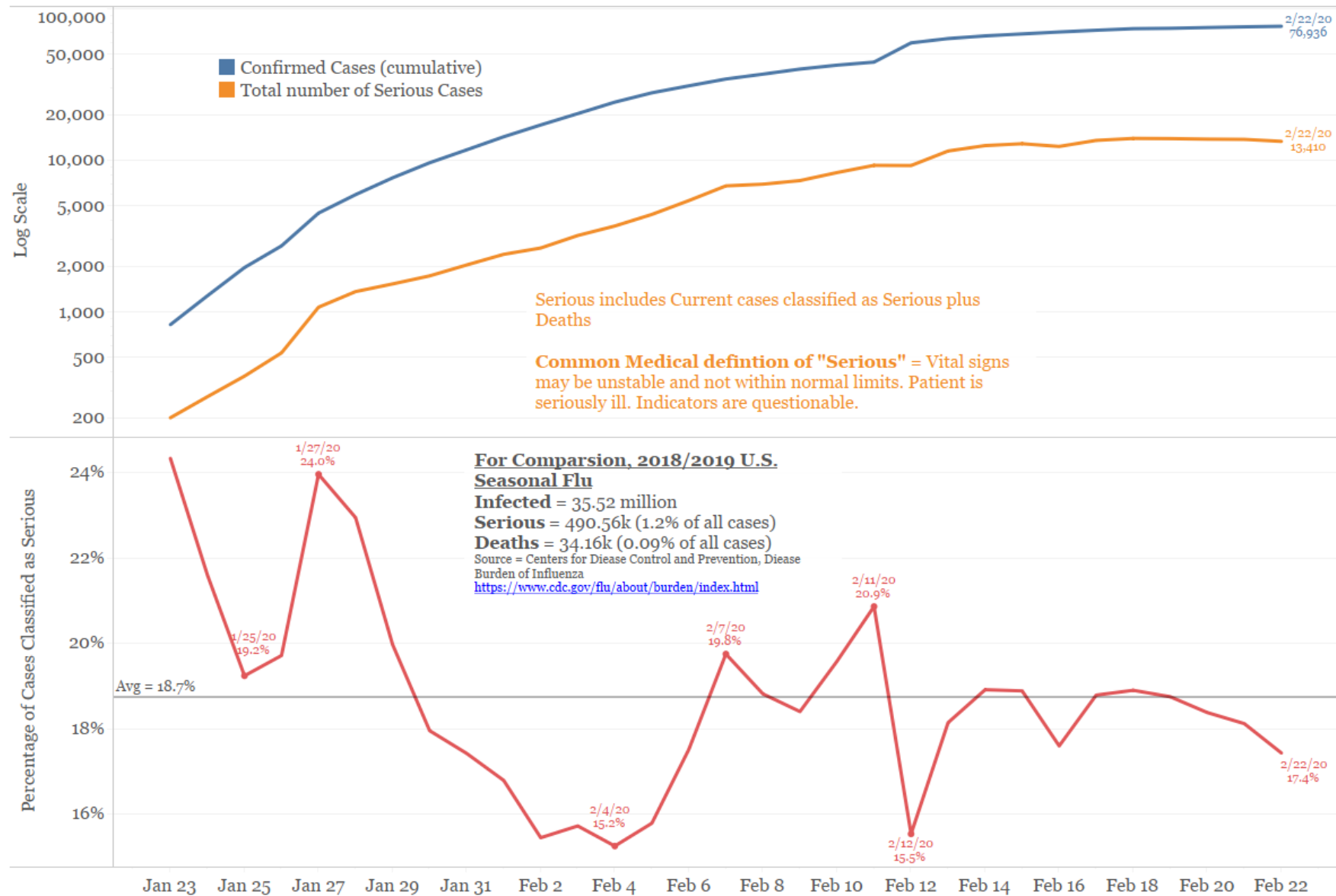
Tracking Infection Growth



Source: China National Health Commission Daily Reports
<http://www.diaspor.net/health/sars/Total.html>
https://en.wikipedia.org/wiki/2009_flu_pandemic_tables

© 2020 Bianco Research, L.L.C. All Rights Reserved
<https://www.biancoresearch.com>

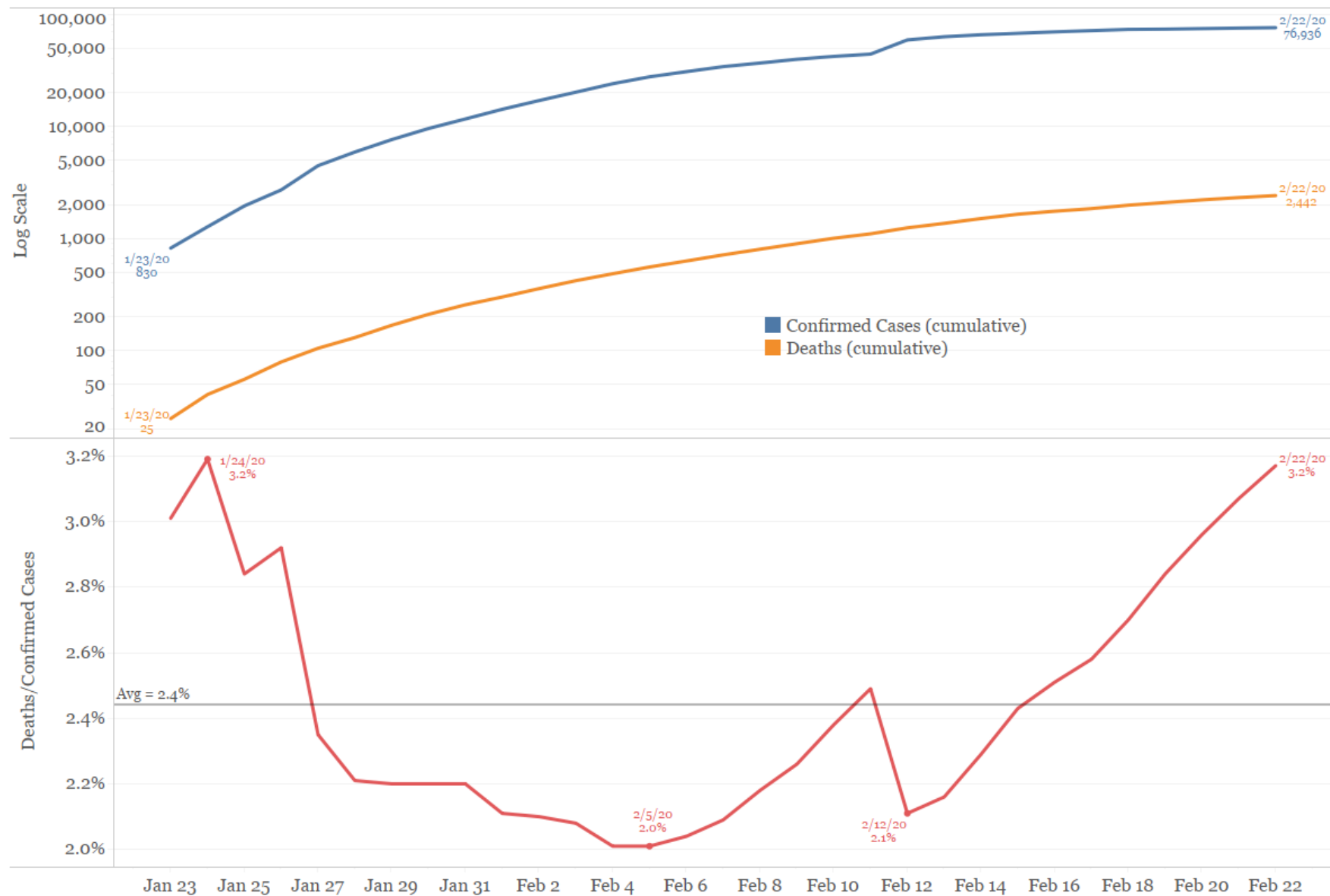
Serious Cases Holding Around 20% of All Cases



Source: https://en.wikipedia.org/wiki/Timeline_of_the_2019%E2%80%9320_Wuhan_coronavirus_outbreak

© 2020 Bianco Research, L.L.C. All Rights Reserved
<https://www.biancoresearch.com>

Mortality Rate is Rising

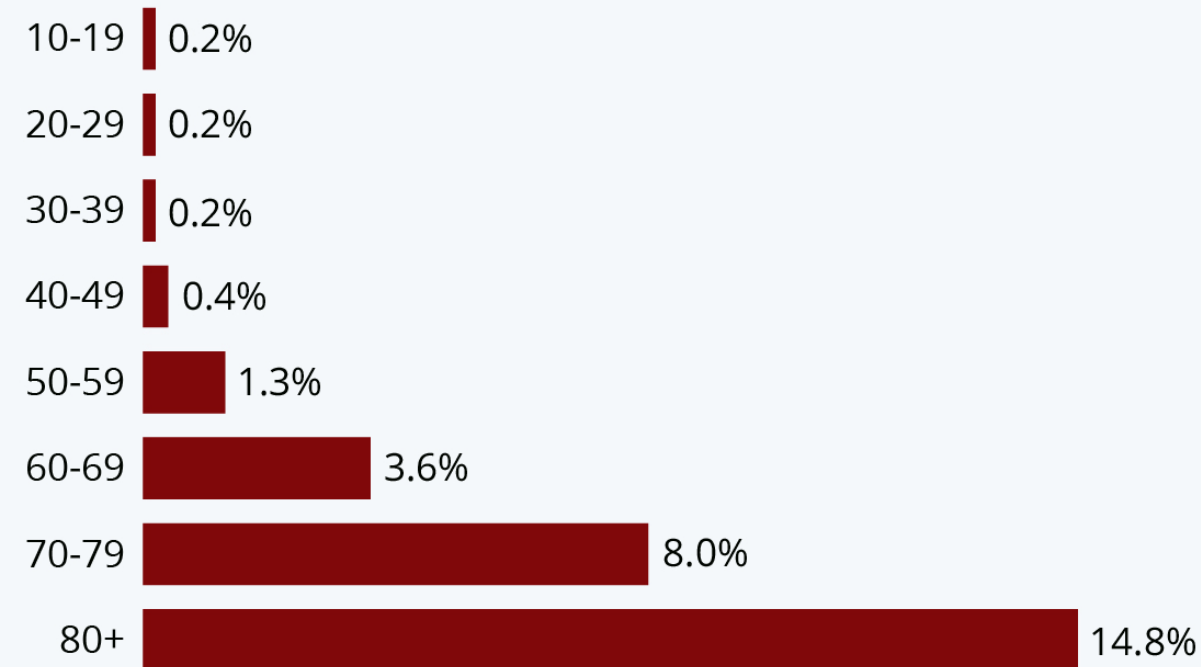


Source: https://en.wikipedia.org/wiki/Timeline_of_the_2019%E2%80%9320_Wuhan_coronavirus_outbreak

© 2020 Bianco Research, L.L.C. All Rights Reserved
<https://www.biancoresearch.com>

Study: Elderly Most At Risk From The Coronavirus

COVID-19 fatality rate by age (as of February 11, 2020)



n=44,672 confirmed COVID-19 cases in Mainland China
Source: Chinese Centre for Disease Control and Prevention



statista

Everyone knows that China was essentially closed in February. Even President Xi has said this is a fact to get rid of the virus.

So why are the China PMI forecasts (released Friday, February 28) only showing a slight downtick from 50 to 47?

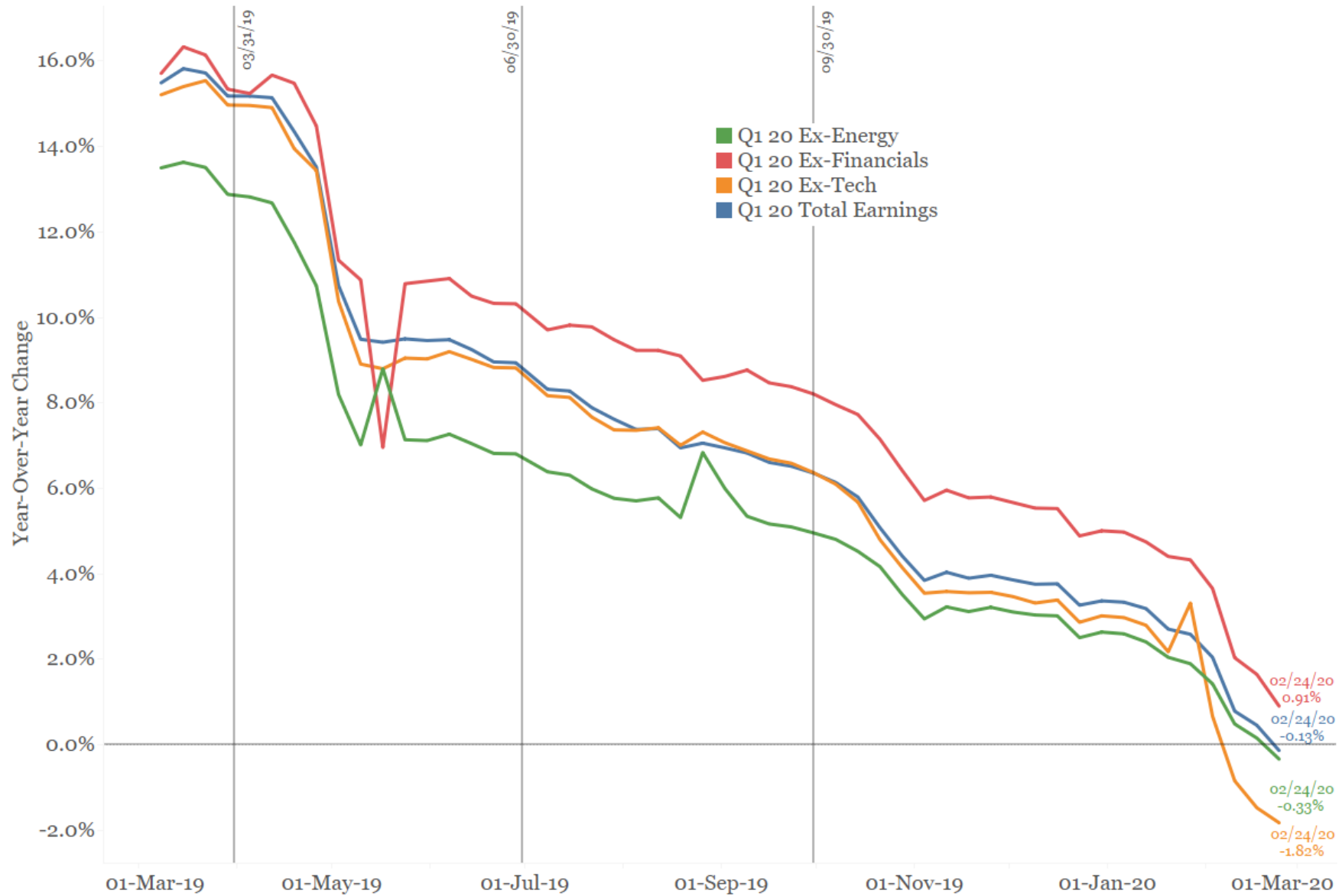
The question is "how was you level of activity this month relative to the past three months?" The possible answers are "higher, same or lower."

More detail on the survey here.
<https://askwonder.com/research/please-information-possible-caixin-china-manufacturing-pmi-survey-questions-zg0vh7hzz>

It should be zero (or very close to it). And if it is not close to zero, it underscores how statistics from China are made up.
Actually, it an insult to common sense that a shutdown country should see its PMI merely downtick from 50 to 47.

1) Calendars ▾		2) Alerts		3) Export ▾		4) Settings ▾		Economic Calendars			
🇨🇳 China		🔍 Browse		15:06:41		02/23/20 📅		-		03/01/20 📅	
Economic Releases ▾		All Economic Releases ▾						View 🔵		Agenda ● Weekly 🔄	
	Date	Time	A	M	R	Event	Period	Surv(M)	Actual	Prior	Revised
21)	02/25	20:00				Bloomberg Feb. China Economic Survey					
22)	02/28	19:00			🔔	Composite PMI	Feb	--	--	53.0	--
23)	02/28	19:00			🔔	📊 Manufacturing PMI	Feb	47.4	--	50.0	--
24)	02/28	19:00			🔔	Non-manufacturing PMI	Feb	50.0	--	54.1	--
25)	03/01	19:45			🔔	📊 Caixin China PMI Mfg	Feb	49.4	--	51.1	--

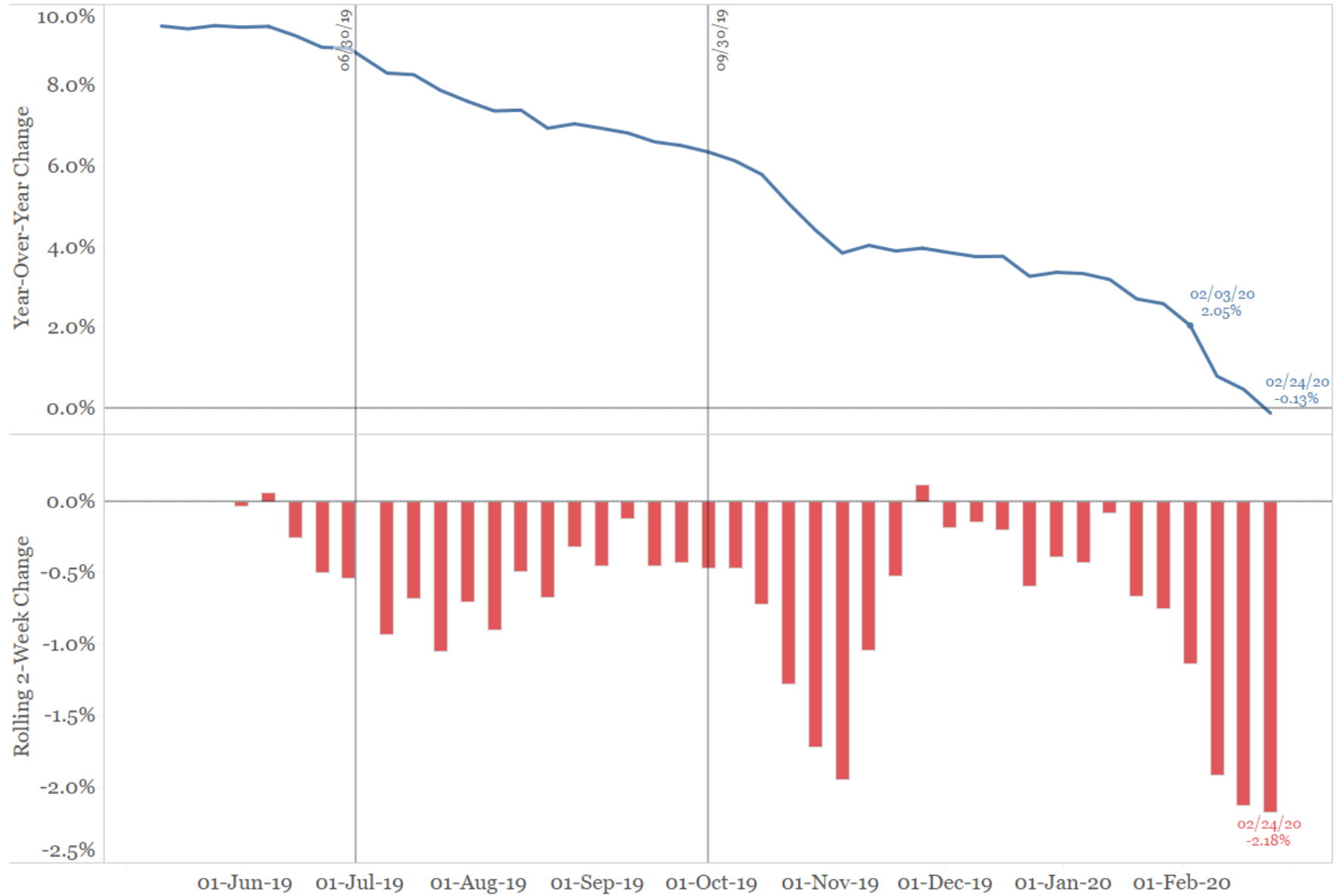
Q1 2020 S&P 500 Operating Earnings Expectations



Source: Bloomberg

© 2020 Bianco Research, L.L.C. All Rights Reserved
<https://www.biancoresearch.com/>

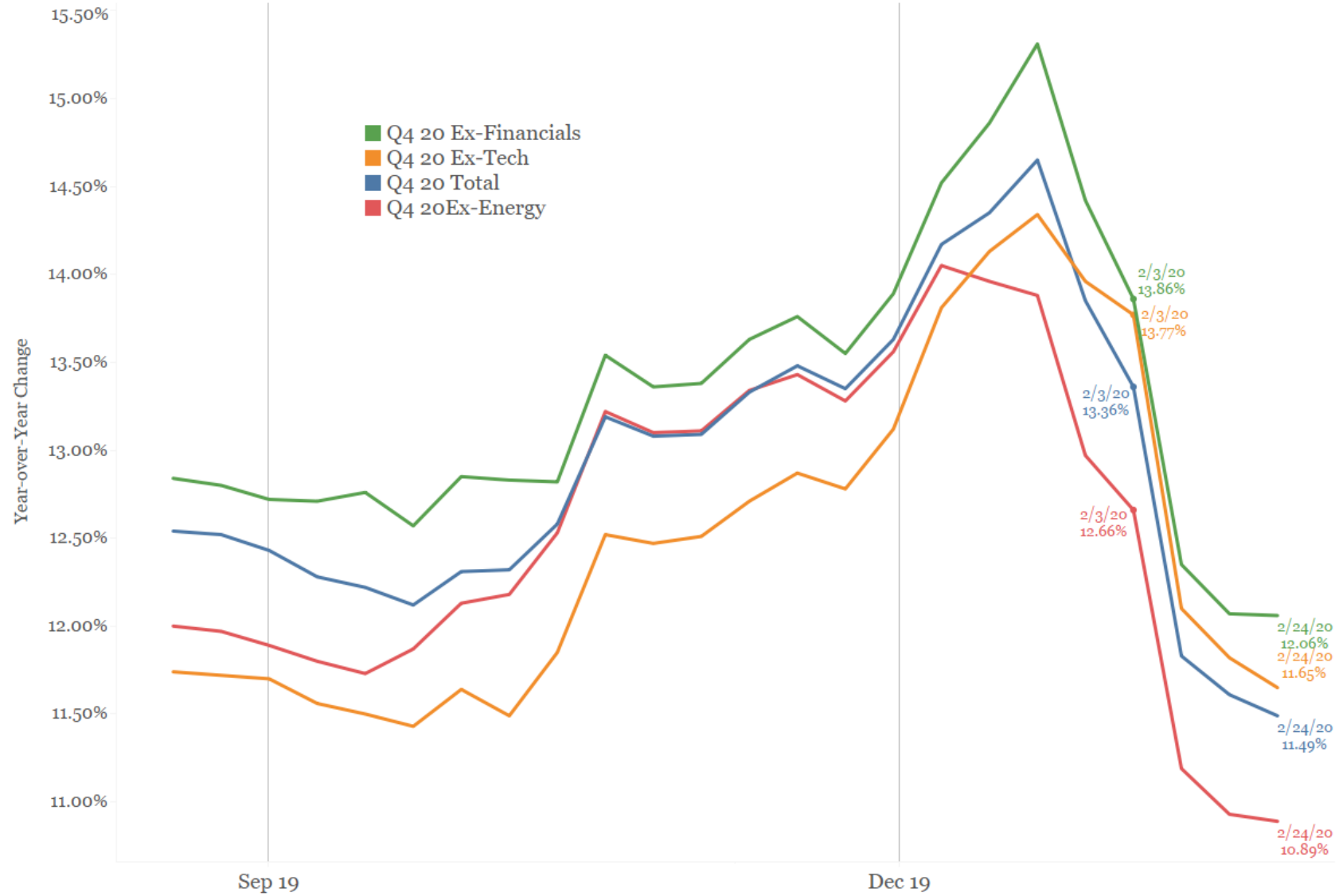
Q1 2020 S&P 500 Operating Earnings Expectations



Source: Bloomberg

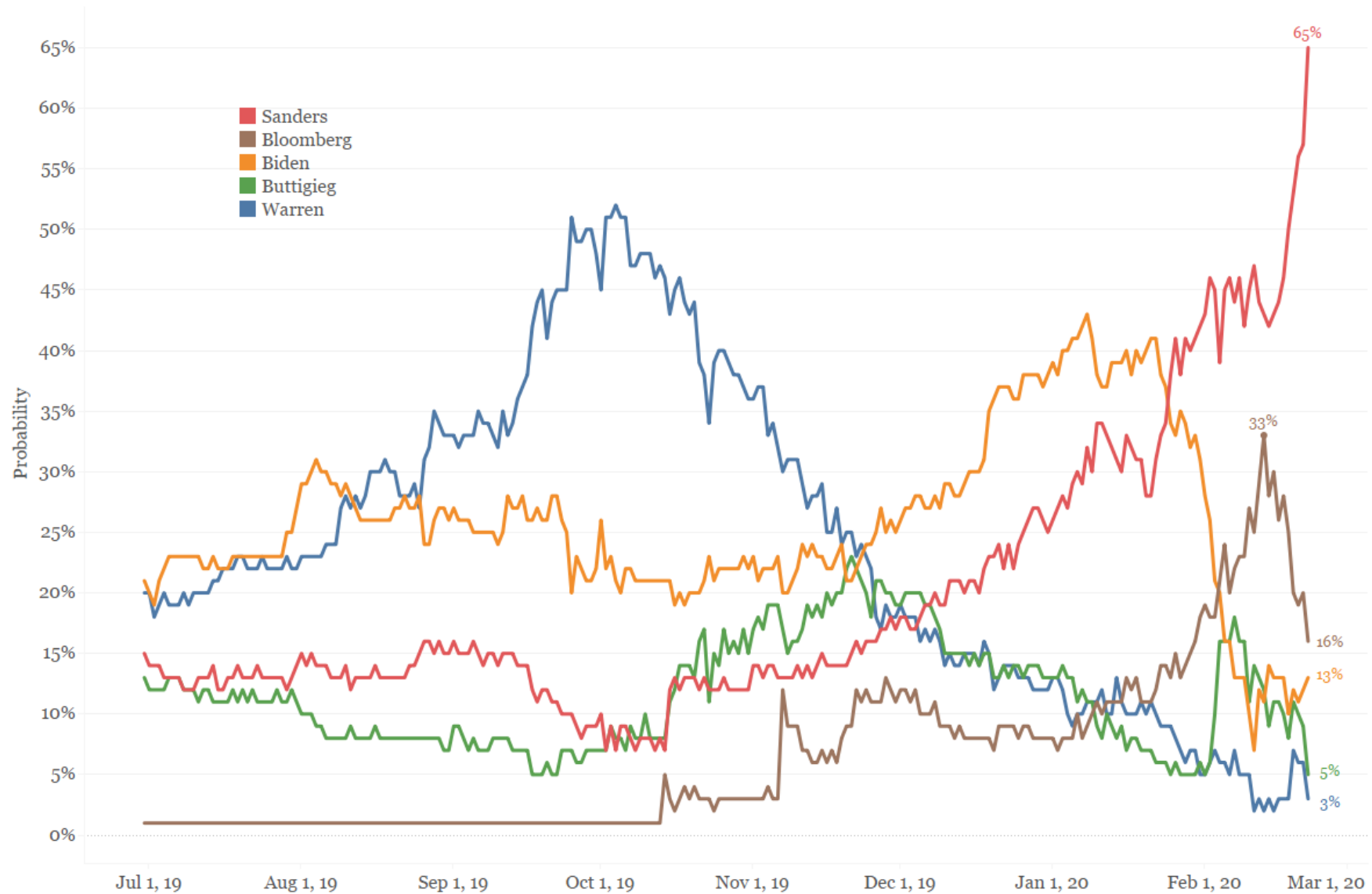
© 2020 Bianco Research, L.L.C. All Rights Reserved
<https://www.biancoresearch.com/>

S&P 500 Q4 2020 Earnings Expectations



Who Will Be the 2020 Democrat Nominee?

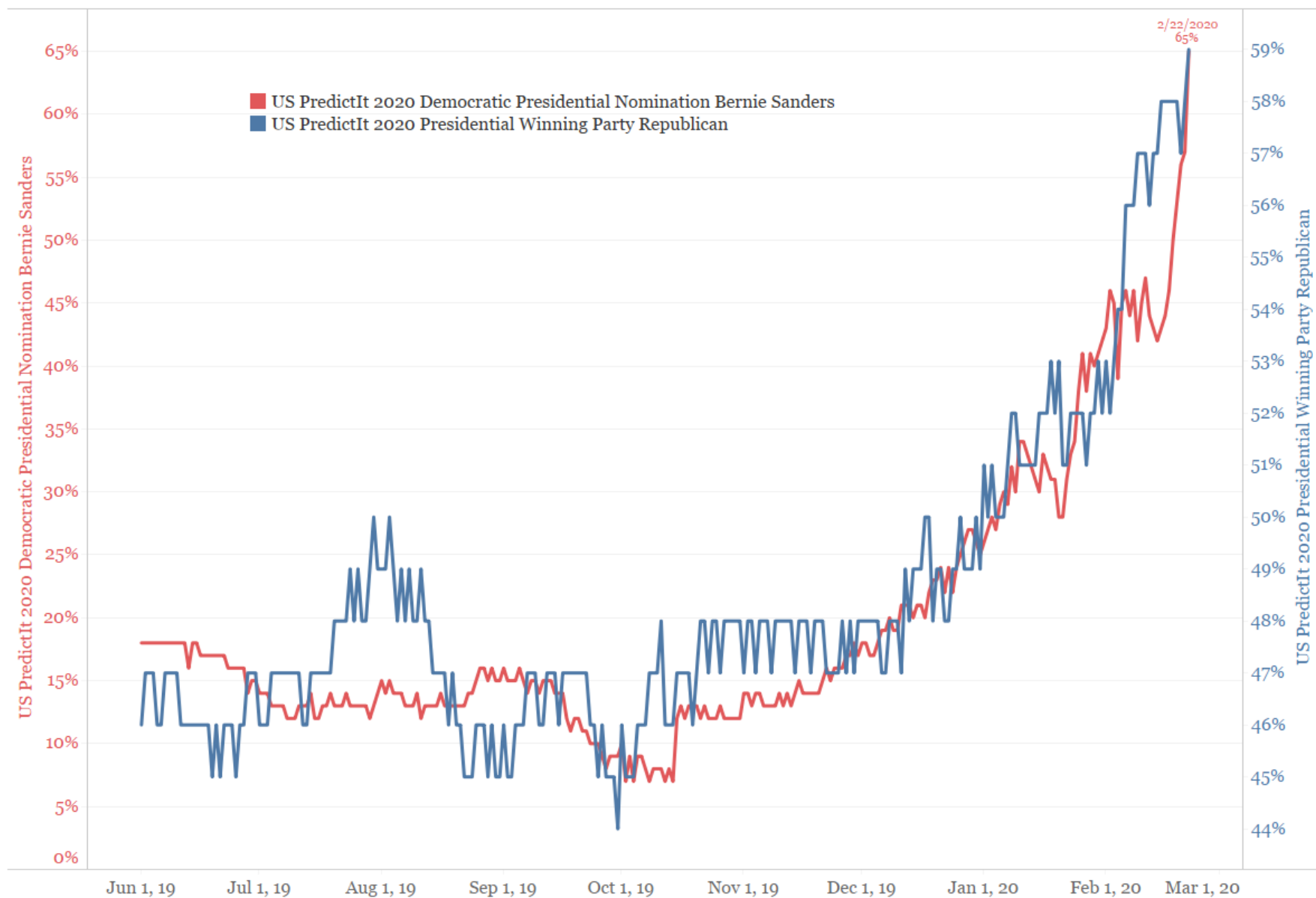
Predictit.org Betting Markets



Source: Predictit
<https://www.predictit.org/markets/detail/3633/Who-will-win-the-2020-Democratic-presidential-nomination>

© 2020 Bianco Research, L.L.C. All Rights Reserved
<https://www.biancoresearch.com>

Does Sanders Getting The Nomination Help Trump Win Re-Election?



Source: PredictIt

© 2020 Bianco Research, L.L.C. All Rights Reserved
<https://www.biancoresearch.com>

Will the Democrats Have a Brokered Convention in 2020?

Predictit.com Betting



Source: Predictit
<https://www.predictit.org/markets/detail/6168/Will-the-Democrats-have-a-brokered-convention-in-2020>

© 2020 Bianco Research, L.L.C. All Rights Reserved
<https://www.biancoresearch.com>

Who Will Win The South Carolina Democrat Primary?

February 29, 2020



Source: Predictit
<https://www.predictit.org/markets/detail/5409/Who-will-win-the-2020-South-Carolina-Democratic-primary>

© 2019 Bianco Research, L.L.C. All Rights Reserved
<https://www.biancoresearch.com>

Predictit.org Election Betting

Candidate	Presid	D... ↓	SC	CA	MA	VA	TX	NC
Bernie Sanders	36¢ ▼	65¢	52¢	91¢	77¢ ▲	69¢ ▲	80¢ ▼	66¢ ▼
Michael Bloomberg	9¢	15¢ ▼	1¢	6¢	4¢ ▼	23¢	6¢ ▼	16¢ ▲
Joe Biden	6¢	12¢ ▼	50¢ ▼	7¢	3¢ ▼	14¢ ▲	15¢ ▲	23¢ ▼
Pete Buttigieg	2¢ ▼	5¢	1¢	2¢ ▼	4¢	3¢ ▲	1¢	1¢ ▼
Elizabeth Warren	1¢ ▼	4¢ ▲	1¢	1¢	28¢ ▲	2¢	2¢ ▲	3¢ ▲
Amy Klobuchar	1¢	1¢	1¢	1¢	1¢	1¢	1¢	1¢

Source: www.predictit.org

[Bianco Research LLC](#)

* Not optimized for mobile, please view this page from a desktop *

US 30-Year Treasury Yield



Source: Bloomberg



Carl Quintanilla

@carlquintanilla

B of A's fund-manager survey asks: What's the biggest risk to markets?"

1. 2020 Election: 26%
2. Bond bubble pops: 22%
3. Coronavirus: 21%

(via @BobPisani) @CNBC

8:48 AM · Feb 18, 2020 · TweetDeck

© 2020 Bianco Research, L.L.C. All Rights Reserved
<https://www.biancoresearch.com/>

The 10-Year less 3-Month Yield Curve

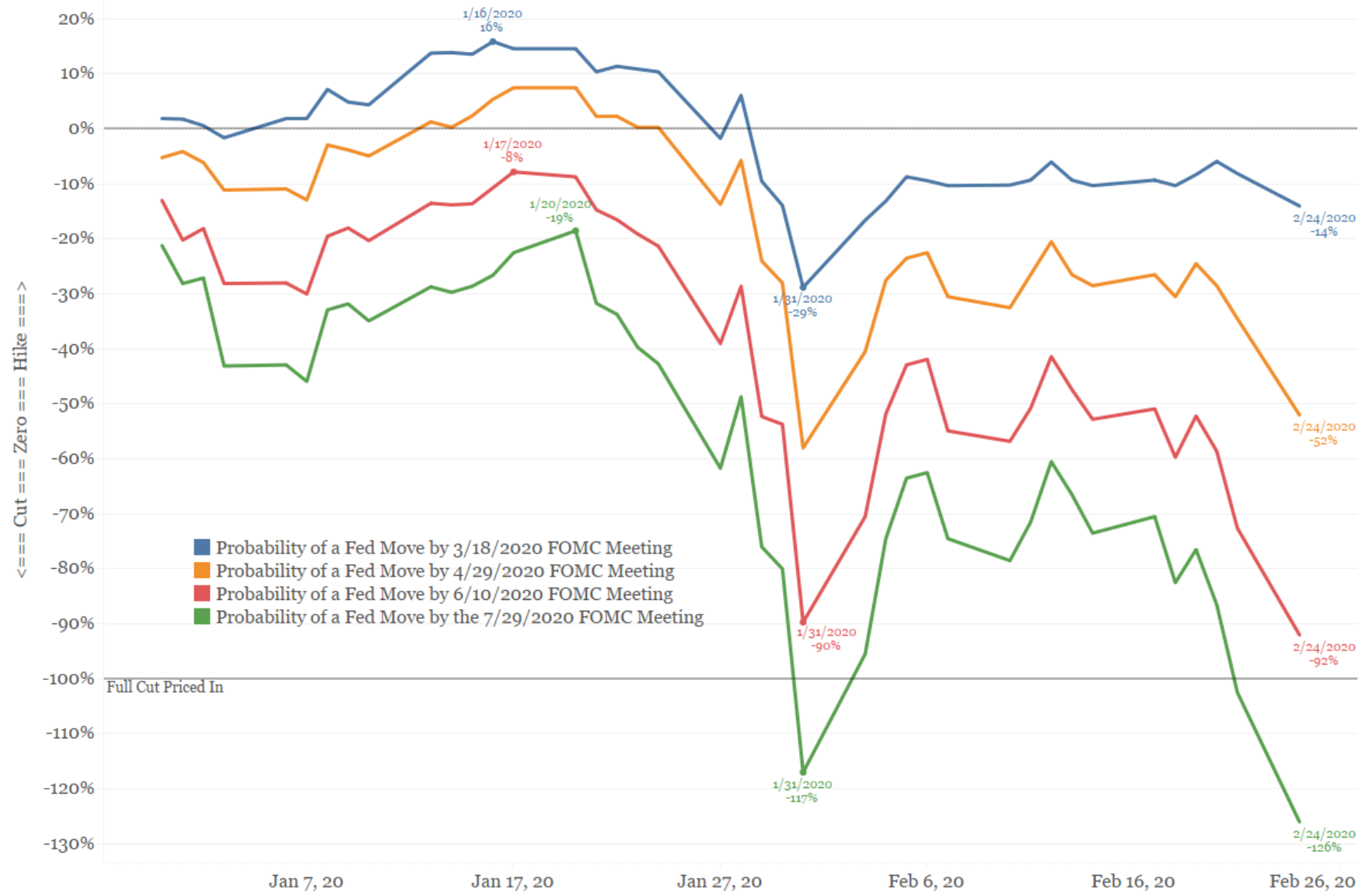


Source: Bloomberg

© 2020 Bianco Research, L.L.C. All Rights Reserved
<https://www.biancoresearch.com>

When Will the Fed Move Again?

Fed Fund Futures Probability of a Move



Data Source: Bloomberg

© 2020 Bianco Research, L.L.C. All Rights Reserved
<https://www.biancoresearch.com/>

Total Negative Yielding Bonds Outstanding



Source: Bloomberg

© 2020 Bianco Research, L.L.C. All Rights Reserved
<https://www.biancoresearch.com/>

Interest Rates in the Developed World

As of 2/21/2020

Country	Policy Rate	6-Month	1-Year	2-Year	3-Year	4-Year	5-Year	6-Year	7-Year	8-Year	9-Year	10-Year	15-Year	30-Year
Switzerland	-0.75	-0.86	-0.83	-0.85	-0.87	-0.86	-0.85	-0.84	-0.82	-0.84	-0.81	-0.76	-0.61	-0.45
Denmark	-0.75	-0.78		-0.68			-0.59			-0.52		-0.42		
Germany	-0.50	-0.59	-0.63	-0.65	-0.66	-0.65	-0.62	-0.61	-0.58	-0.54	-0.49	-0.43	-0.32	0.05
Netherlands	-0.50	-0.60		-0.63	-0.64	-0.64	-0.59	-0.54	-0.50	-0.45	-0.41	-0.35	-0.22	0.03
Finland	-0.50		-0.60	-0.64	-0.62	-0.60	-0.58	-0.49	-0.45	-0.36	-0.32	-0.25	-0.03	0.21
Austria	-0.50		-0.60	-0.63	-0.63	-0.59	-0.53	-0.48	-0.41	-0.39	-0.34	-0.28	-0.02	0.28
Japan	-0.10	-0.15	-0.17	-0.17	-0.18	-0.18	-0.17	-0.18	-0.18	-0.16	-0.11	-0.06	0.09	0.35
Belgium	-0.50	-0.59	-0.57	-0.60	-0.61	-0.56	-0.50	-0.46	-0.39	-0.32	-0.28	-0.21	0.03	0.54
France	-0.50	-0.58	-0.58	-0.63	-0.61	-0.57	-0.50	-0.46	-0.40	-0.37	-0.28	-0.20	0.03	0.53
Ireland	-0.50		-0.55		-0.52	-0.46	-0.40	-0.34	0.00		0.00	-0.16	0.19	0.59
Sweden	0.00	-0.19		-0.34		-0.41	-0.38	-0.35		-0.30	-0.22	-0.12	0.06	
Sweden	0.00	-0.19		-0.34		-0.41	-0.38	-0.35		-0.30	-0.22	-0.12	0.06	
Portugal	-0.50	-0.47	-0.47	-0.46	-0.34	-0.30	-0.14	-0.08	-0.03	0.08	0.13	0.23	0.46	0.98
Spain	-0.50	-0.49	-0.48	-0.46	-0.45	-0.34	-0.26	-0.10	-0.01	0.06	0.15	0.22	0.55	1.01
Italy	-0.50	-0.36	-0.31	-0.22	-0.03	0.08	0.29	0.40	0.56	0.67	0.78	0.91	1.35	1.90
United Kingdom	0.75	0.67	0.62	0.51	0.45	0.46	0.46	0.41	0.44	0.46	0.51	0.57	0.78	1.00
Australia	0.75	0.93	0.79	0.67	0.64	0.64	0.67	0.71	0.75	0.84	0.89	0.94	1.14	1.53
New Zealand	1.00		1.73	0.94			1.02		1.16			1.25	1.65	
Canada	1.75	1.63	1.59	1.42	1.38	1.34	1.30		1.30			1.28		1.39
United States	1.63	1.52	1.42	1.35	1.32		1.32		1.40			1.47		1.91

Concept courtesy of @CharlieBilello

<https://www.biancoresearch.com>

Bianco Research L.L.C.

550 W Washington Blvd
Suite 201
Chicago, IL 60661

Phone: (847) 304-1511
Fax: (847) 304-1749
e-mail: research@biancoresearch.com
<http://www.biancoresearch.com>

For more information about the contents/ opinions contained in these reports:

President (847) 756-3599
James A. Bianco jbianco@biancoresearch.com

Analyst (847) 304-1511
Greg Blaha gblaha@biancoresearch.com

For subscription/service Information:

Arbor Research & Trading, Inc.
Director of Sales & Marketing (800) 606-1872
Max Konzelman Max.Konzelman@arborresearch.com

Arbor Research & Trading, L.L.C

1000 Hart Road, Suite 260
Barrington IL 60010

Phone: (847) 304-1550 Fax: (847) 304-1595
e-mail: inforequest@arborresearch.com
<http://www.arborresearch.com>

Domestic - For more information about Arbor Research & Trading and its services:

New York Sales Office

10 East 40th Street 13th Floor
New York, NY 10174
Edward T. McElwreath ed.mcelwreath@arborresearch.com
Phone (212) 867-5326 Fax (212) 370-1218

International - For more information about Arbor Research & Trading and its services:

London Sales Office

2nd Floor
1-2 Broadgate
London
EC2M 2QS
Phone 44-207-100-1051
Neil Tritton neil.tritton@arborresearch.com
Ben Gibson ben.gibson@arborresearch.com

Chicago Sales Office

James L. Perry james.perry@arborresearch.com
Phone (847) 304-1560 Fax (847) 304-1595

Geneva Sales Office

Rich Kleinbauer rich.kleinbauer@arborresearch.com
Phone (41) 22 565-2480