



# Looking Under the Hood of the Markets

Thursday January 14, 2021

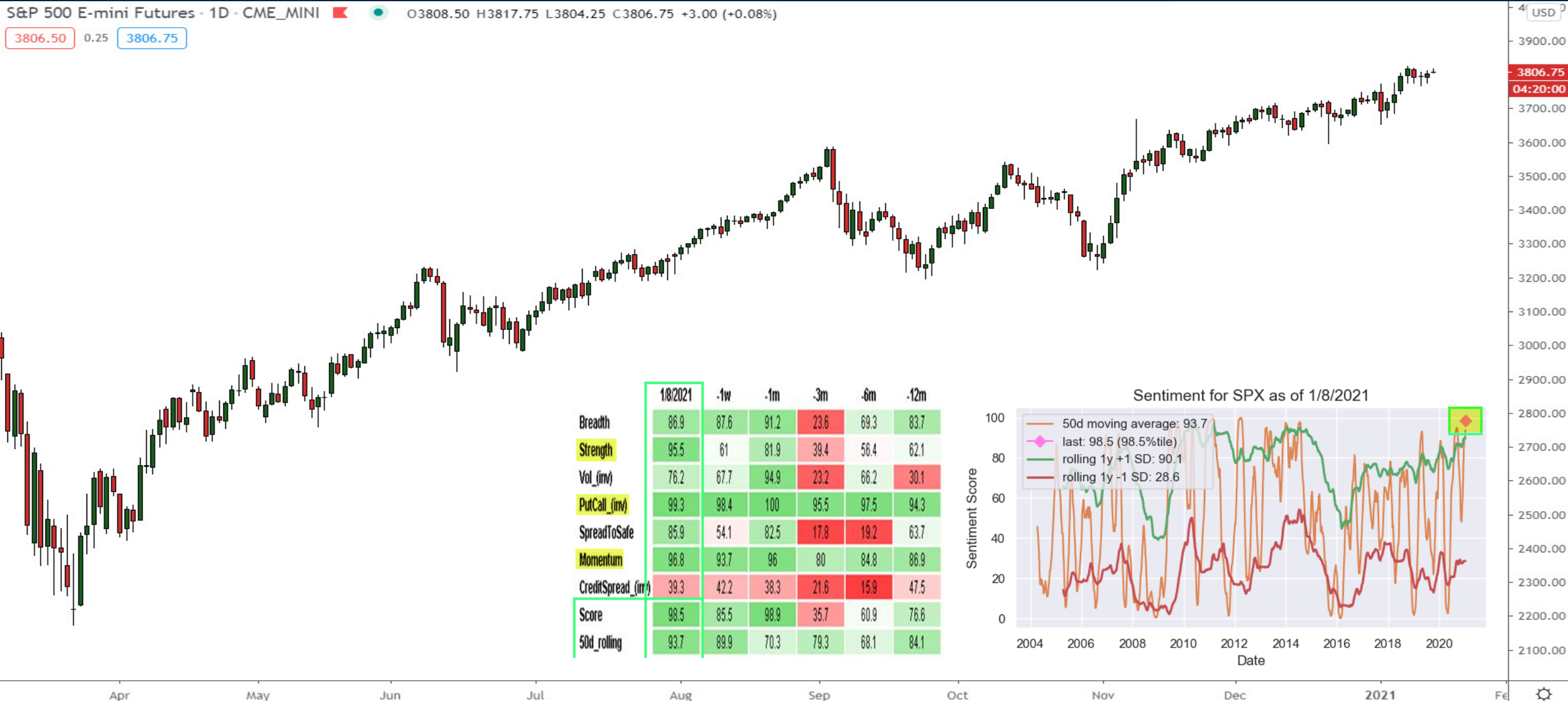


**BIG PICTURE**  
T R A D I N G

# S&P500 Index Futures

S&P 500 E-mini Futures - 1D - CME\_MINI ▲ ● O3808.50 H3817.75 L3804.25 C3806.75 +3.00 (+0.08%)

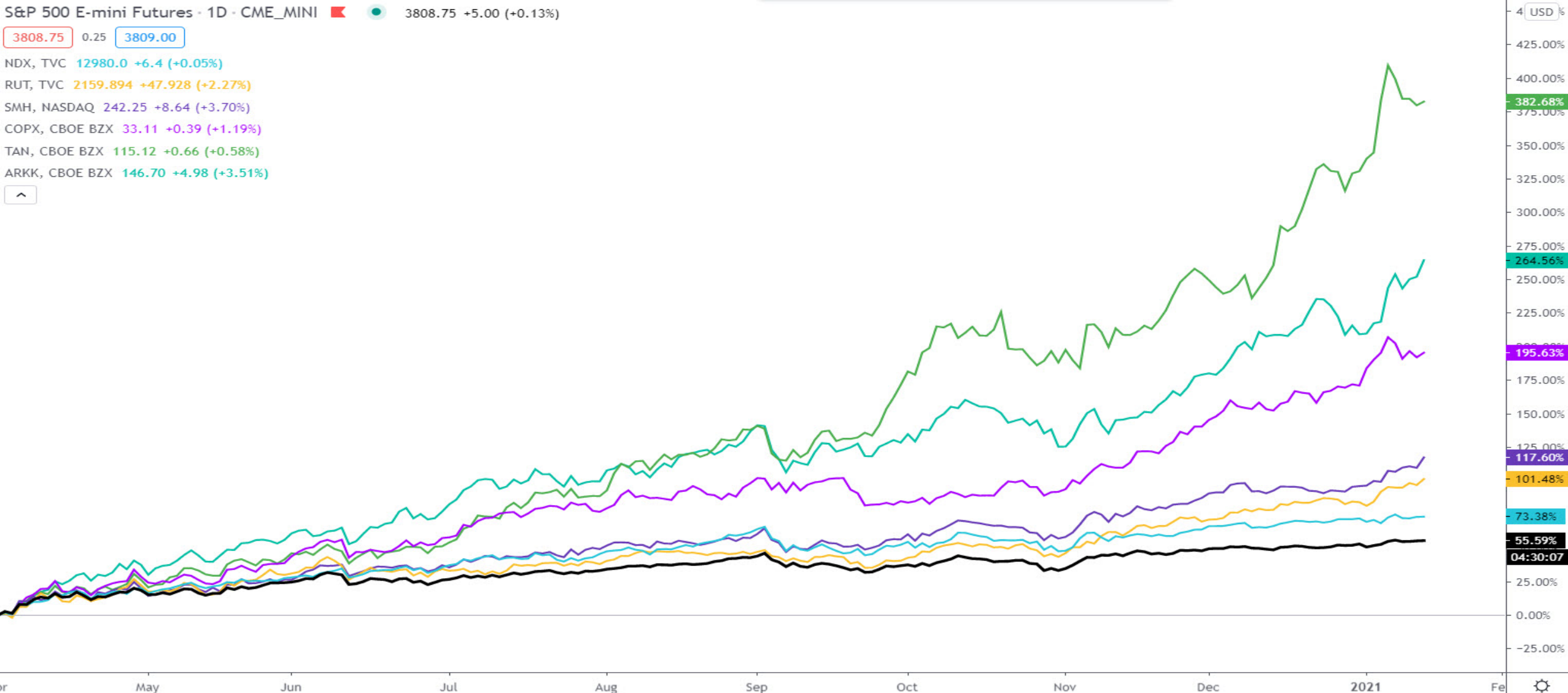
3806.50 0.25 3806.75



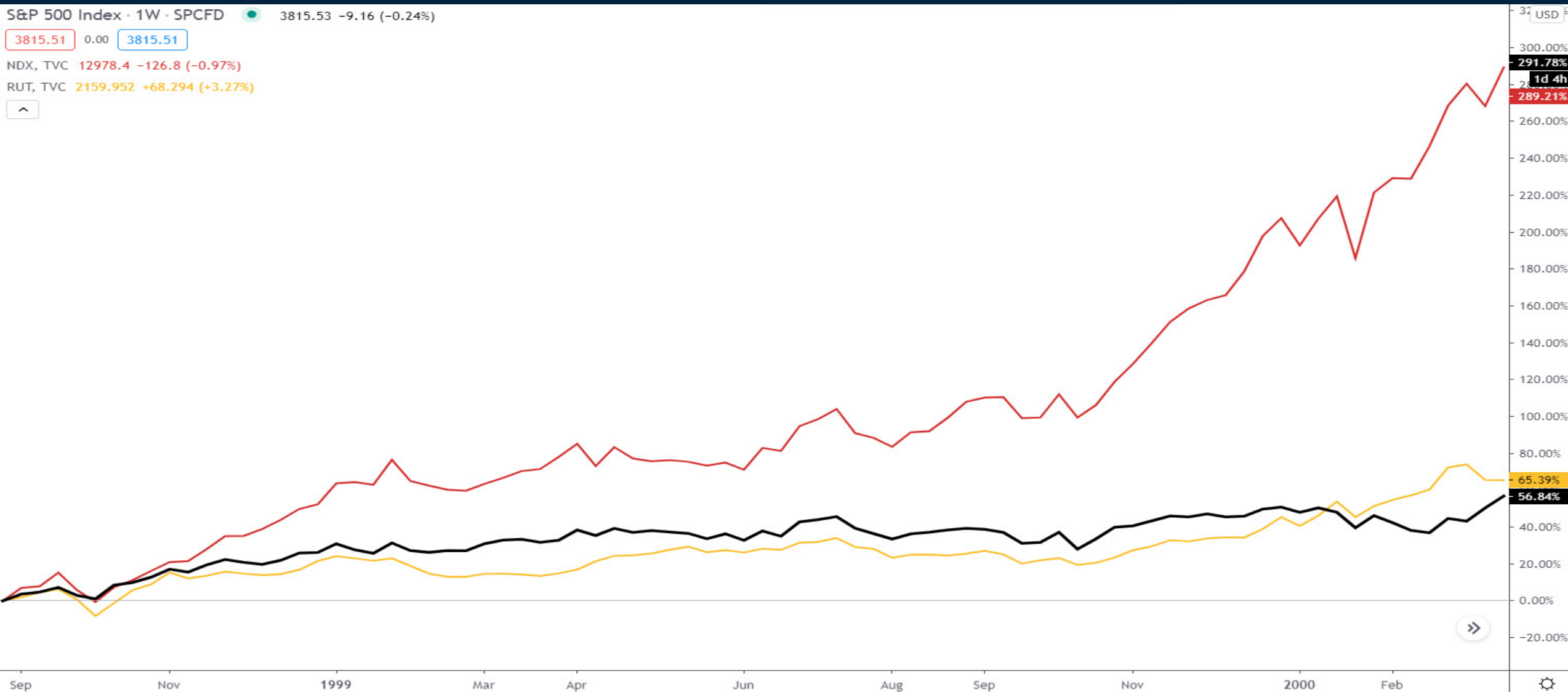
# Perspective on Post Crash Performance

S&P 500 E-mini Futures - 1D - CME\_MINI 3808.75 +5.00 (+0.13%)

3808.75 0.25 3809.00  
NDX, TVC 12980.0 +6.4 (+0.05%)  
RUT, TVC 2159.894 +47.928 (+2.27%)  
SMH, NASDAQ 242.25 +8.64 (+3.70%)  
COPX, CBOE BZX 33.11 +0.39 (+1.19%)  
TAN, CBOE BZX 115.12 +0.66 (+0.58%)  
ARKK, CBOE BZX 146.70 +4.98 (+3.51%)



# Index Performance Comparison 1998-2000



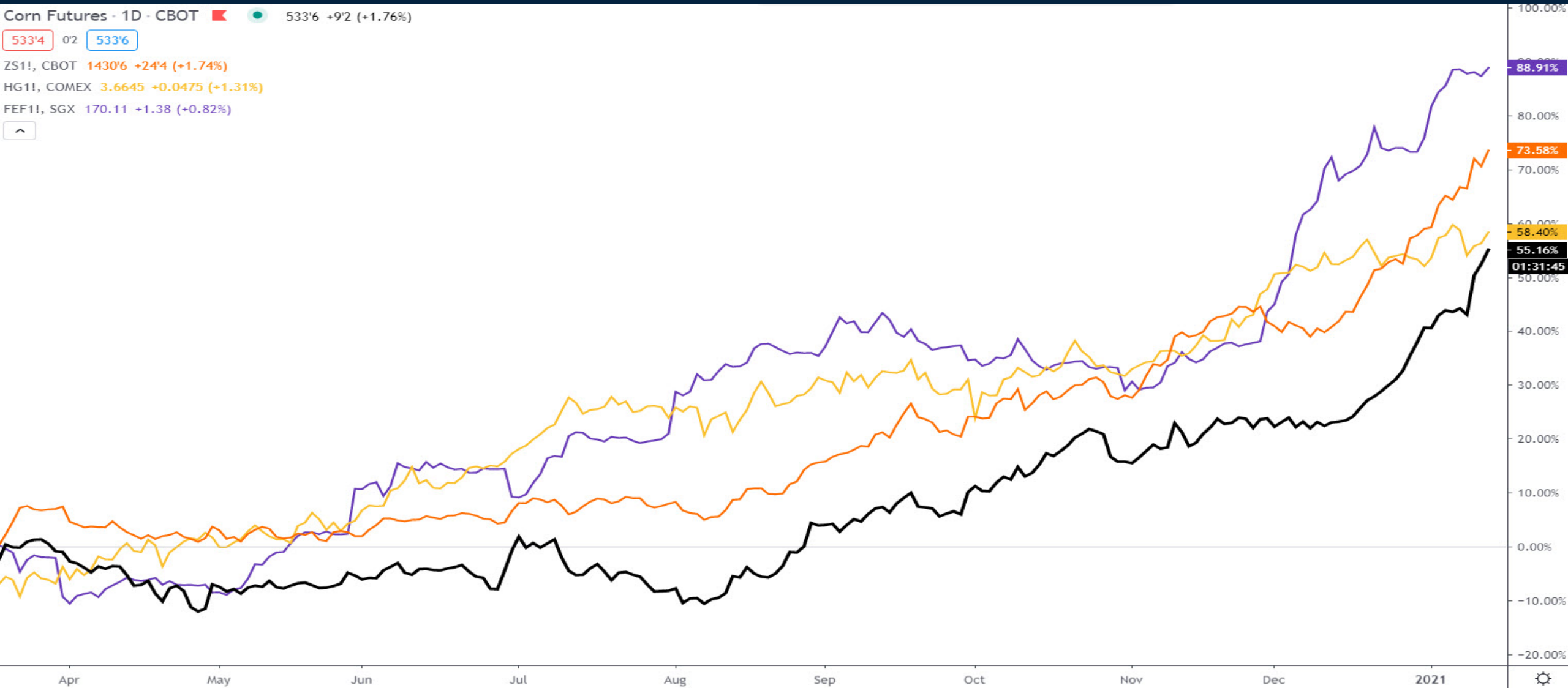
# Index Performance Comparison 2000-2002



# Gold Futures



# Commodity Performance



# 10 Year US Government Bond Yields



# 2s10s Yield Curve



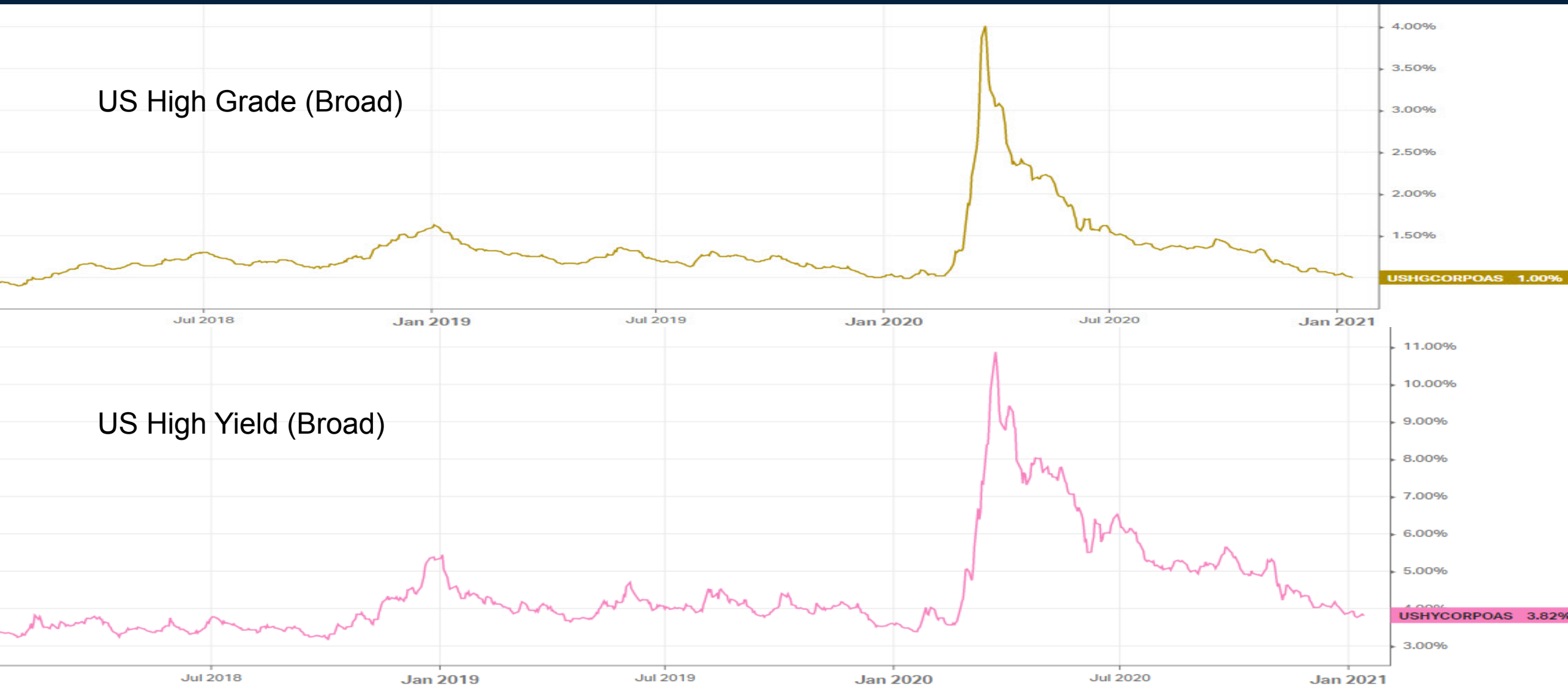
# ProShares Inflation Expectations ETF



# Junk Bonds, IG Corporates, Treasury Bonds



# Corporate Bond Option-Adjusted Spread



# Monthly Membership Includes:

- Daily “Macro Outlook” video
- Watch Patrick analyze and demonstrate trades LIVE during “Where’s the Trade”
- Daily LIVE Q&A
- Weekly position summary
- Hours of FREE educational videos and bootcamps
- Access to members only LIVE webinars

**\$99**USD/month

**SIGN UP NOW!**





Trade along with Patrick  
**Sign up for a FREE 14-day Trial**

**SIGN UP NOW!**

Have questions?  
[contact@bigpicturetrading.com](mailto:contact@bigpicturetrading.com)



**BIG PICTURE**  
T R A D I N G